

N101R

CAPACITIVE TOUCH DISPLAY



1000 nits High Bright



Auto Dimming



Multi Points Touch



Rich Interfaces



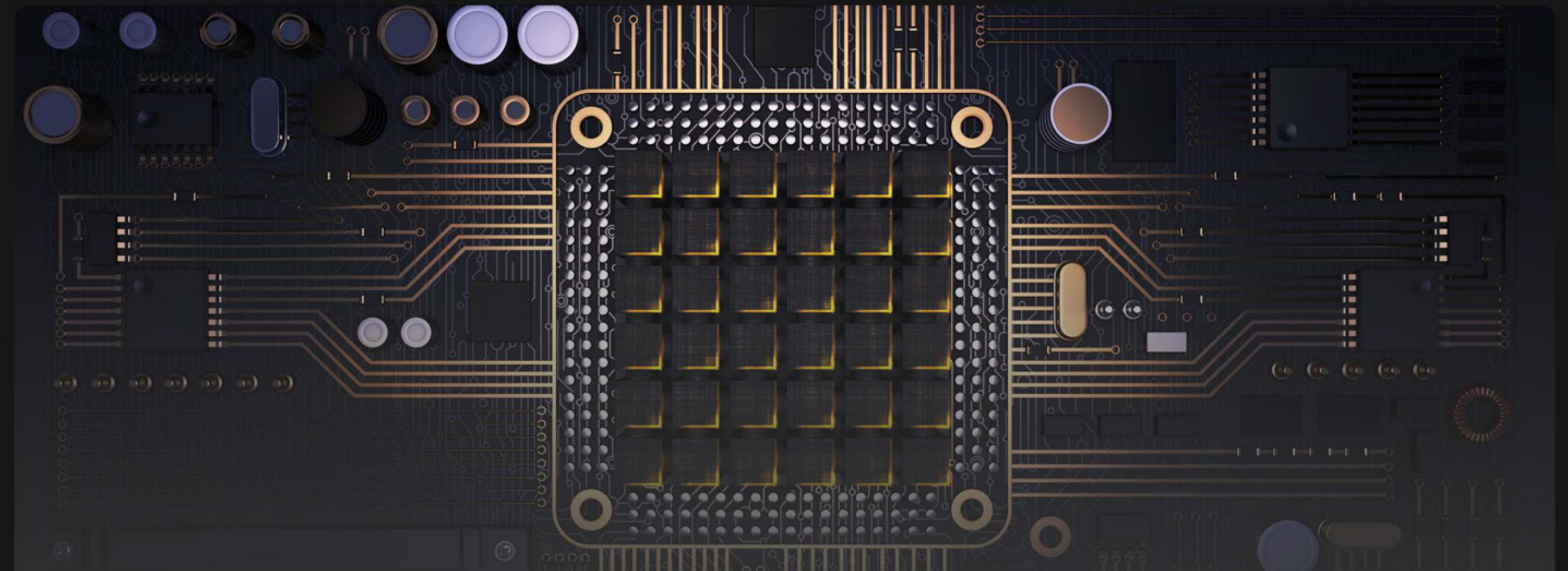
ISO7637-2



Android 10

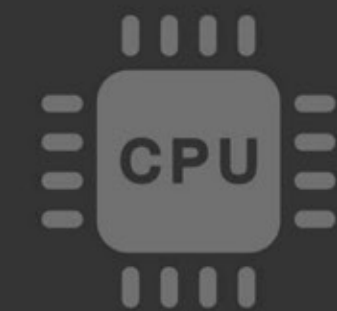
10.1" ANDROID PANEL PC

This is an Android 10 OS Panel PC with a 10.1" capacitive touch function, and 1000 nits LED screen, which comes with rich interfaces and ABS plastic housing. This device can be connected through LAN, WiFi, Bluetooth and contains transmission interfaces (GPIO, RS232, etc) to be controlled by software.



RK3288 Cortex-A17

RK3288 offers extensible, leading performance, long-standing heritage platform, ideally suited for panel PC solution. The platform is integrated with a Quad-Core Cortex-A17 which up to 1.8GHz. Abundant interfaces provide friendly solution for development. Furthermore, the power consumption is optimal for applications such as imaging/video, communication and performance audio, etc.



CPU

Rockchip RK3288 Cortex®-A17 1.8GHz Quad-Core processor



Android OS

Android 10 operation system



Memory

RAM: 2GB LPDDR3
ROM: 16GB eMMC



Bluetooth

5.0, 2402MHz~2480MHz



Wi-Fi

802.11a/b/g/n/ac, 2.4 GHz & 5 GHz



GNSS

GPS / GLONASS



Cellular Network

LTE, HSPA+, UMTS, EDGE, GPRS, GSM



Front Camera

5.0 MP front camera.

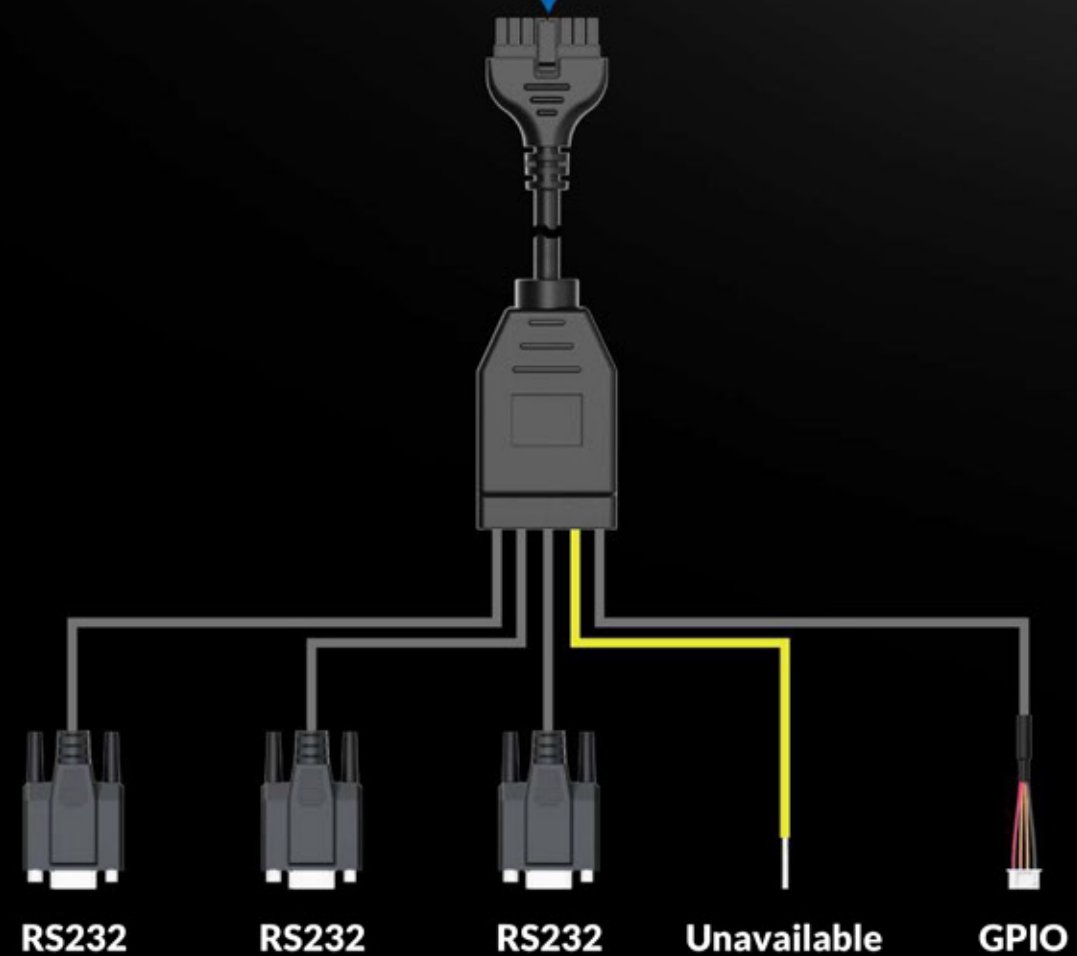
*Tips: Bluetooth & Wi-Fi, Cellular Network, GNSS and Front Camera functions are optional items.

10.1" High-Bright Display

The 10.1" 16:10 LCD panel with 1280×800 HD resolution, 1000:1 contrast, 170° viewing angles, 1000 nits brightness, which offers outstanding viewing experience.



- DC Power In
- 1000M LAN
- MicroSD Card Slot
- HDMI Output
- GPIO | RS232
- USB-A Host
- USB-C OTG
- SIM Card Slot
- Earphone Jack

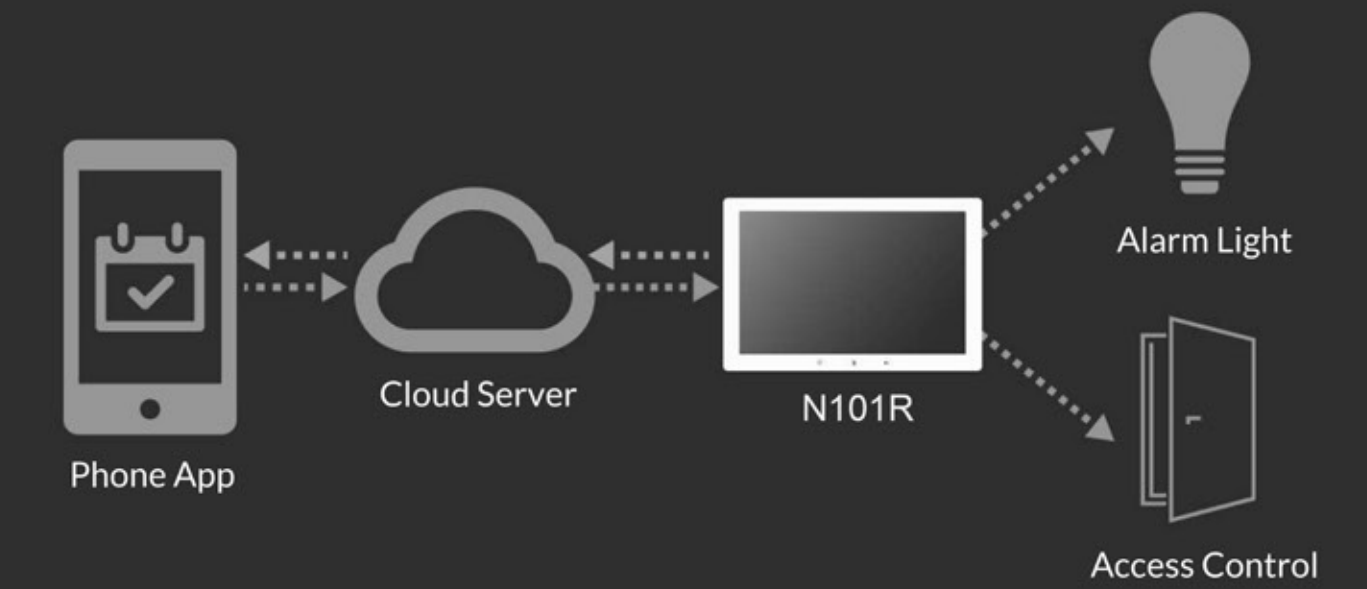


GPIO&RS232 Extension Cable

To meet the requirements for multiple interfaces and saving space, panel pc is equipped with a unique expansion cable that brings together different interfaces in a single cable, for instance, RS232, GPIO, etc.

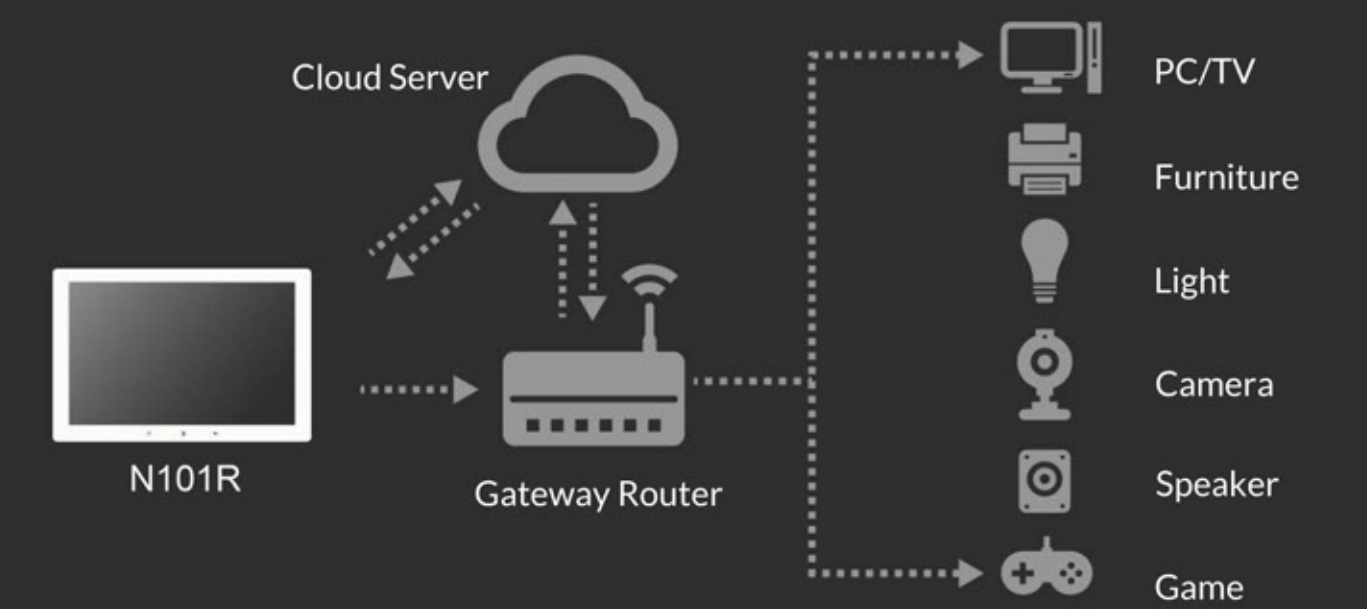
Applications & Solutions

Incredible flexible to customize products according to customer demands. Multiple platforms and modules for optional. Through perfect combination of client-side sensor and software, we can help to realize various field applications.



Conference Display

Panel pc can be used as part of a meeting room management system to provide statistics data on the utilisation of each meeting room over a period of time. To enable efficient use of meeting rooms and further improve economic efficiency.



Smart Home Interface

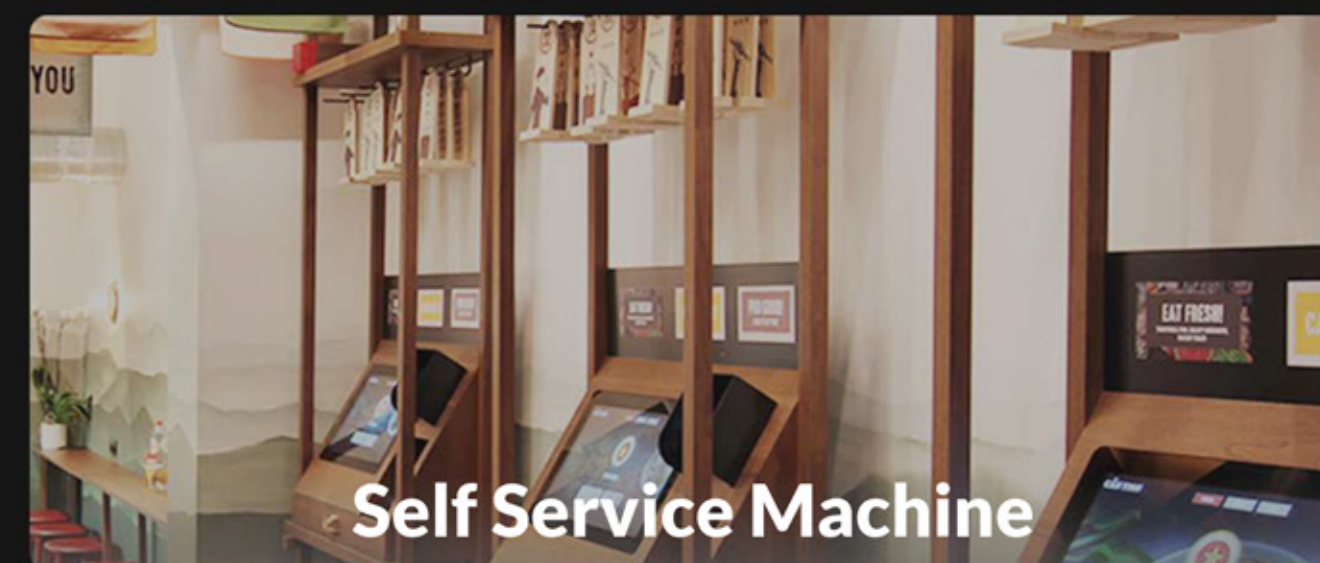
The smart home panel pc connects various devices in the home together through IoT technology, providing a full range of information interaction and even saving money on various energy costs.



Queuing System



Digital Signage



Self Service Machine



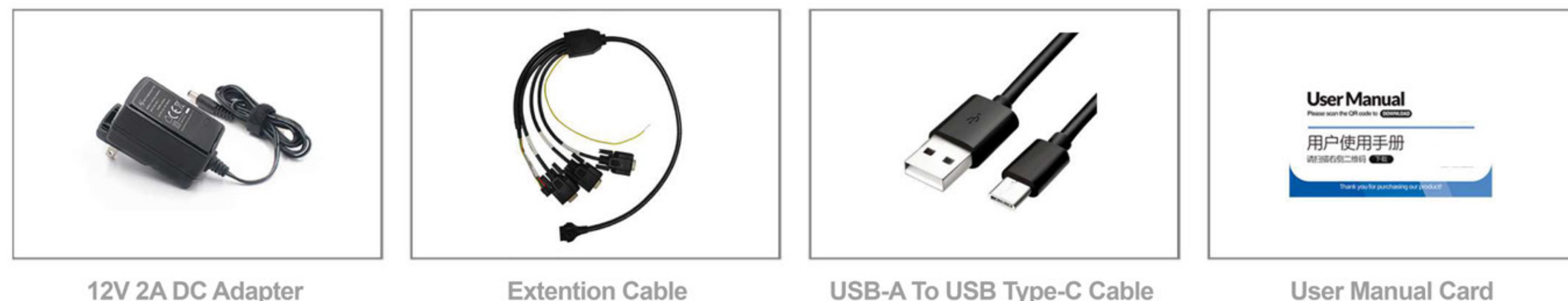
Customer Feedback

Specifications

	RK3288	Qualcomm	
SYSTEM	CPU	Rockchip RK3288 Cortex®-A17 Quad-core 1.8GHz processor	Qualcomm Cortex®-A53 64-bit Octa-core 1.8GHz processor
	OS	Android 10	Android 9.0
	RAM + ROM	2GB LPDDR3 + 16GB eMMC	2GB LPDDR3 + 16GB eMMC, 4GB + 64GB are optional
	GPU	Mali-T764	Adreno 506
PANEL	Sensors	Light and Proximity Sensor (Auto dimming)	Light Sensor (Auto Dimming)
	LCD	10.1" IPS, 1280×800, 1000 nit, 170°/170° viewing angle	10.1" IPS, 1280×800, 1000 nit, 170°/170° viewing angle
	Touch Screen	Multi-point capacitive touch screen	Multi-point capacitive touch screen
INTERFACE	LAN	1000M×1	1000M×1 (PoE is optional, 25W)
	GPIO	×4 (Input×2, output×2)	×4 (Input×2, output×2)
	COM	RS232×3	RS232×3
	HDMI	×1 Output, support up to 1080p	×1 Output, support up to 1080p
	SIM Card	×1	×1
	MicroSD Card	×1, support up to 128GB	×1, support up to 128GB
	USB	USB host×2, USB Type-C OTG×1	USB host×2, USB Type-C OTG×1
	Earphone Jack	3.5mm	3.5mm
	WIRELESS	Wi-Fi	Optional 802.11a/b/g/n/ac, 2.4GHZ/5GHZ
Bluetooth		Optional 5.0, 2402MHz~2480MHz	5.0, 2402MHz~2480MHz
Cellular Network		Optional 3G/4G (LTE, DC-HSPA+, UMTS, EDGE, GPRS, GSM)	Optional 3G/4G (LTE, DC-HSPA+, UMTS, EDGE, GPRS, GSM)
GNSS		Optional (GPS, GLONASS)	Optional (GPS, GLONASS)
NFC		-	Optional
BUILT-IN	Front Camera	Optional, 5.0MP	Optional, 5.0MP
	Speaker	×1	×1
POWER	Power Supply	DC 9~36V	DC 9~36V
	Power Consumption	≤17W	≤12W
OTHER	Dimension	249mm×166mm×32mm	249mm×166mm×32mm
	Weight	980g	980g
	Environment	Operating Temp: -10°C~60°C (14°F~140°F) Storage Temp: -20°C~65°C (-4°F~149°F)	Operating Temp: -10°C~60°C (14°F~140°F) Storage Temp: -20°C~65°C (-4°F~149°F)



ACCESSORIES



12V 2A DC Adapter

Extension Cable

USB-A To USB Type-C Cable

User Manual Card

Customized Service

(The following elements are specific to customised items and do not represent parameters of this PC)

Development Platform



Operation System



Interface Types



Wired Communication

RS232, RS422, RS485, Ethernet, CANBus, J1939, OBD-II, ACC, GPIO...

Wireless Communication



Screen Panel

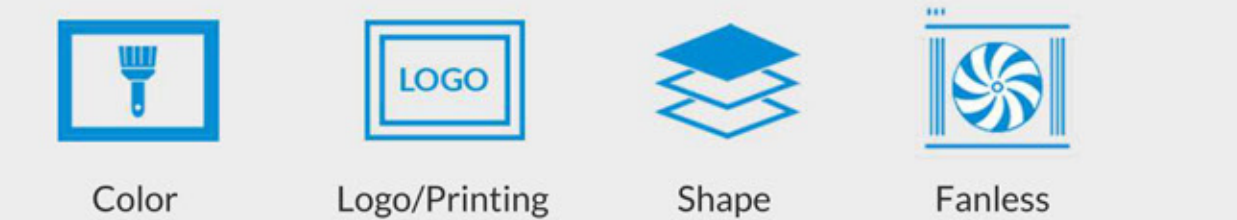


Appearance Structure

Material Iron, Stainless Steel, Aluminum, ABS Plastic...

Processing CNC, Die-cast, Sheet metal...

Basic Appearance



Application Environment



neway®

Quanzhou NEWAY Industrial Limited

Tel: +86-595-22519926 / Fax: +86-595-22519925
Email: info@neway.me / Web: www.neway.me